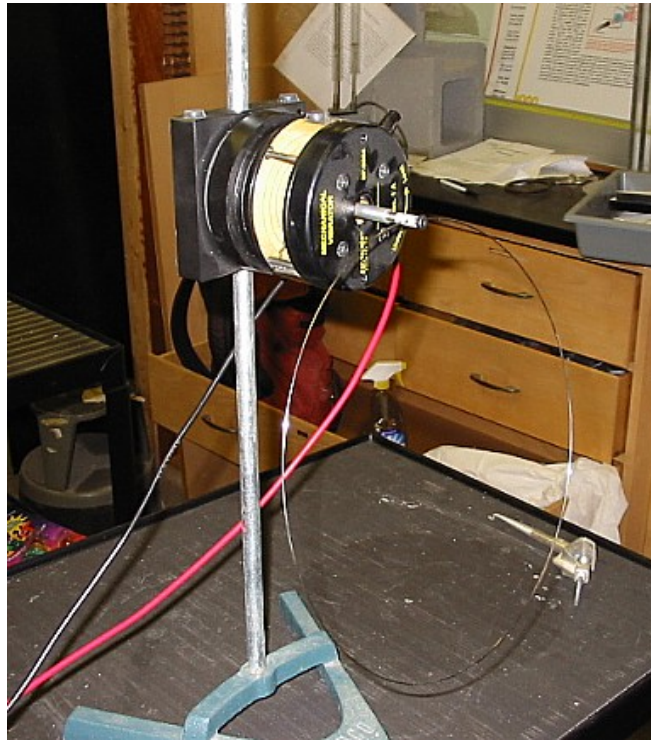


Circular Standing Waves



The Setup

Purpose: Demonstrates transverse standing waves on a circular wire.

Connect the circular wire by its banana plug into the motion transducer, which is mounted vertically. You can establish standing transverse waves at several frequencies. My favorite is at 31 Hz with two (dramatic) nodes. Using the stroboscope you can slow the motion, revealing a sort of flopping pancake action.

Note: Make sure the screw in the banana plug is tight; else the wire pops off after a certain amount of jiggling.

Extra Equipment: Ring stand, stroboscope, and Sine wave generator and motion transducer (Shelf D2). Strobe Light!

Location: Shelf D2